

# Solar Cabin



View to the entry from the Southeast.

## Imagine:

A high style house that can be custom built to suit.

A house that produces its own heat and electricity.

A house that is built with the healthiest materials available.

A house with exterior materials that are durable and low maintenance.

A house that includes the life style features that you have come to expect: modern appliances, digital TV, high speed Internet and future adaptability.

A house that collects rain water and directs it to the native plantings.

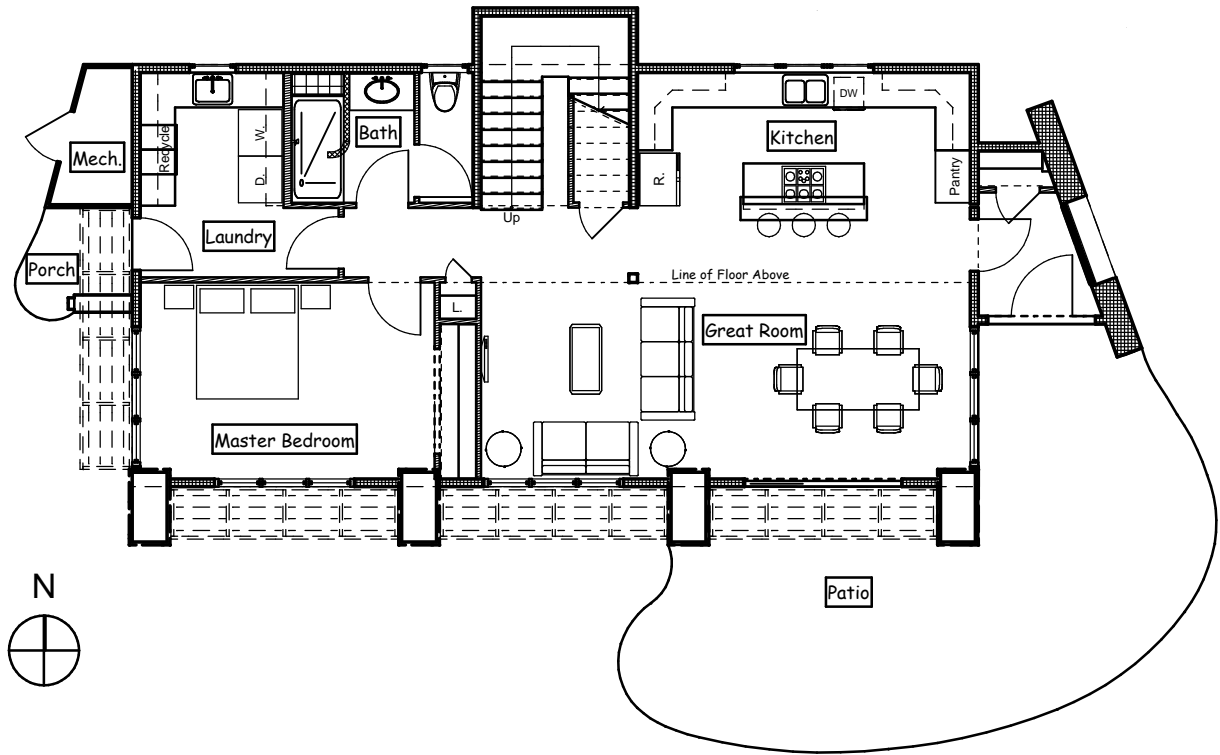
A house that has the latest safety features built in.

A house with universal accessibility built in.

The Solar Cabin artfully integrates these proven technologies to provide a leap forward in construction practice and delivers a home that out performs all production housing being built today.

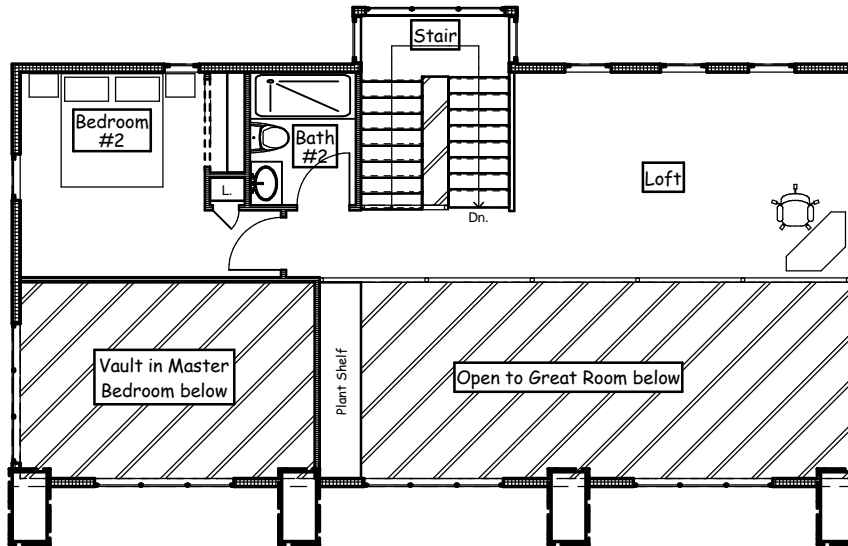
Call or write today for a free one hour consultation.

Contact Paul Adams: [padams@earthskyarchitecture.com](mailto:padams@earthskyarchitecture.com)



## Main Level Plan

Main Level = 1290 sq.ft.  
 Upper Level = 532 sq.ft.  
 Total = 1822 sq.ft.



## Upper Level Plan

© Copyright 2005  
 by Earth and Sky  
 Architecture, LLC  
 All Rights Reserved